

# FAYETTEVILLE MuseumOfArt

Business Name

Contact Person

Address

City State Zip

Business Number

Email

## THE CORPORATE COUNCIL

### *Museum Society*

\$5,000 CORPORATE PARTNER

\$2,500 CORPORATE ASSOCIATE

\$1,500 CORPORATE LEADER

\$1,000 CORPORATE BENEFACTOR

### *Curator's Circle*

\$500 CORPORATE DIRECTOR

\$250 CORPORATE MEMBER

Payment Type

Visa or Mastercard# Exp.

Print name as it appears on your card

Check # (Please make checks payable to the Fayetteville Museum of Art)

Signature

Please mail to: Fayetteville Museum of Art, P.O. Box 35134, Fayetteville, NC 28303

If you have any questions please call (910) 485-5121

## BOARD OF TRUSTEES 2008/2009

MENNO PENNINK, M.D. **PRESIDENT**

JOHN MALZONE **1st VICE PRESIDENT**

MAC HEALY **2nd VICE PRESIDENT**

STEPHEN TERRY **TREASURER**

ANDREA POWERS **SECRETARY**

LAUREN MCLEAN ALLRED

RYAN C. AUL

SABRINA BARR

JENNY BEAVER

DR. ED DICKERSON

DR. GERALD ELLISON

PAT LEAHY

STEPHANIE MAHANEY

ERIC MANSFIELD, M.D.

DAVID McCUNE

VIRGINIA OLIVER

CHRIS POWELL

JULIE RUFENACHT

TERRY SMITH, D.D.S.

MEREDITH STIEHL

MARK STERNLICHT

DANIEL UBA, M.D.

CHYRL GARRETT-WEBER

**The Fayetteville Museum of Art**

**839 Stamper Road, P.O. Box 35134**

**Fayetteville, NC 28303**

**910•485•5121**

# FAYETTEVILLE MuseumOfArt

## Corporate Giving

# Corporate Giving

Are you looking to involve your business in an investment opportunity that offers high yields, guaranteed dividends, and is tax-deductible? Then Corporate Membership is good business—a smart and effective use of your charitable giving or marketing dollars.

By aligning your organization with FMOA, you help sustain the Museum as a vital cultural and educational resource for the entire community, which is an investment in the quality of life that your employees have come to expect.

Your company:

- gains valuable recognition in partnership
- reaches a demographically desirable target audience in an effective and cost-efficient manner
- gives employees access to popular networking events, invitations to a wide range of Museum functions and discounts for classes and the Museum Gift Shoppe

Your good corporate citizenship will move the Museum's progress forward in a meaningful way for the entire community. Your support of the Museum with membership, financial gifts & volunteerism will provide an enhanced environment for educational and creative activities for now and for the generations to come.

## The Corporate Council

### Museum Society

**CORPORATE PARTNER (\$5,000)** : Benefits of the CORPORATE ASSOCIATE level, plus: Two additional family memberships (ten total), Rental fee waived for one rental of the Museum facilities for a private event during the membership year, Opportunity to use Museum facilities for two business meetings during membership year, 50% off employee memberships for all NEW memberships (renewals not included), Corporate logo recognition on web site, Recognition in Museum Lobby

**CORPORATE ASSOCIATE (\$2,500)** : Benefits of the CORPORATE LEADER level, plus: Two additional family memberships (eight total), 50% Discount for one Corporate Event rental of the Museum facilities during the membership year, 25% off employee memberships for all NEW memberships (renewals not included), hyperlink to your Corporate web site from the FMOA's site

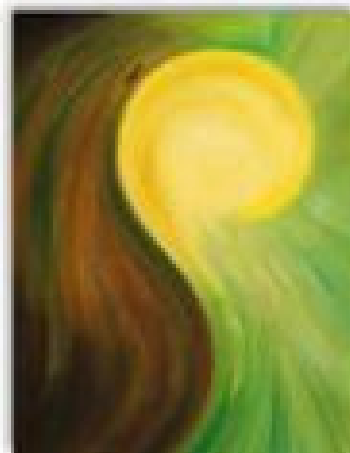
**CORPORATE LEADER (\$1,500)** : Benefits of the CORPORATE BENEFACTOR level, plus: Two additional family memberships (six total), A framed poster of a work of art from the museum's permanent collection

**CORPORATE BENEFACTOR (\$1,000)** : Benefits of the CORPORATE DIRECTOR level, plus: Two additional family memberships (four total), One *Artbreak* lecture (a twenty- to thirty-minute presentation on various art topics) for your company's staff

### Curator's Circle

**CORPORATE DIRECTOR (\$500)** : Benefits of the CORPORATE PATRON level, plus: Two family memberships assignable to employees, customers, or clients

**CORPORATE PATRON (\$250)** : FMOA newsletter, Invitations to special museum events and exhibition premiers, discounts on classes, recognition in newsletter, South Eastern Reciprocal Membership Program, North American Reciprocal Membership Program, 10% discount in the museum store, 10% discount on purchasing individual and family gift membership for employees, Listing on web site



*Bringing art and people together to enrich and transform lives*